

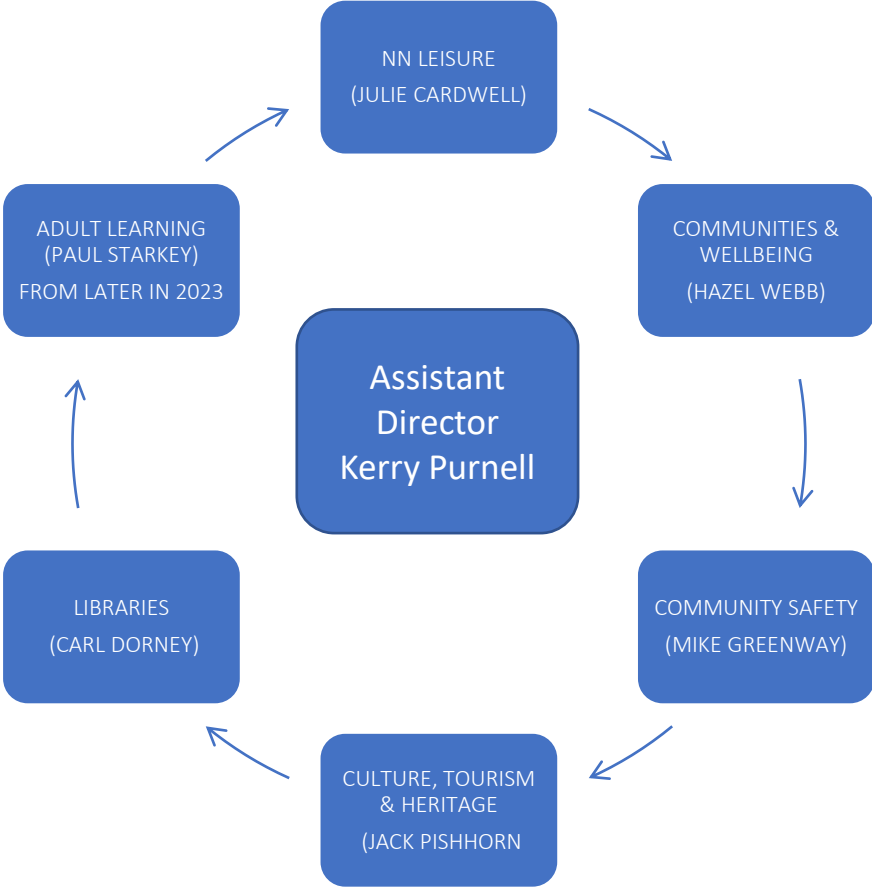
# Communities and Leisure

## Service Plan 2023-24



North  
Northamptonshire  
Council

# Communities and Leisure Overview



# Communities and Leisure Service Plan 23-24 Key Priorities

## All Services

- Continuing to stabilise frontline services by implementing service restructures;
- Aggregating our services and budgets on ERP in order to provide consistency of best practice, efficiency and value for money and improved services to our customers;
- Developing and progressing the delivery of the NNC Levelling Up Plan for our left behind communities;
- Working with developers to identify investment opportunities in our Leisure, Cultural and community estate;
- Enabling a successful move of C&L services to the Public Health and Wellbeing Directorate and integrating and aligning Adult Learning Services



# Overview of North Northamptonshire Leisure

**Julie Cardwell**  
**Strategic Lead - Leisure**



North  
Northamptonshire  
Council



North  
Northamptonshire  
Leisure

# Leisure Services Current Delivery

## In-House Leisure Facility Delivery & Four Leisure Contracts

- 5 x Facilities with Pools
- 6 x Facilities with Sports Halls
- 8 x Gyms
- 1 x 18 hole Golf course
- 5 x Astro/3G pitches
- Grass football pitches
- Over 12 outdoor tennis courts

### NN Facilities managed by organisations:

- 1 x Indoor Tennis Centre
- 1 x Athletics tracks
- 1 x Football stadium
- 1 x Athletics stadium
- 3 x Pavilions
- Football pitches and a Gaelic football pitch



North  
Northamptonshire  
Council



North  
Northamptonshire  
Leisure

# Leisure Services Current Delivery

## In-House Facility Delivery

- Corby East Midlands International pool
- Lodge Park Sports Centre
- Priors Hall Golf Course
- West Glebe
- Hazelwood Neighbourhood Centre
  
- Bar and catering services
- Nursery and Creche facilities
- Swimming and Diving programmes
- Adult Leisure Membership
- Teen Fit Membership
- Junior Leisure Club
- Health and Fitness delivery programme:
  - Activity on Referral
  - Cardiac
  - Stroke
  - Cancer rehab



North  
Northamptonshire  
Council



North  
Northamptonshire  
Leisure

## Sport and Play Delivery

- Events – Kids of Steel Triathlon, Active Communities Awards, Play Days, Sports promotional days etc
- Dance programme and shows
- Walking football and netball
- Cheerleading
- Schools coaching
- Holiday programmes
- Holiday Activity Fund schemes
- Coach Development and training
- North Northamptonshire Sport Network



North  
Northamptonshire  
Council



North  
Northamptonshire  
Leisure

# Leisure Service Plan 23-24 Key Priorities

- Progressing the development of the Leisure Strategic Framework (see below);
- Energy assessments for the leisure estate to inform a bid to the Public Sector Decarbonisation Fund;
- Working collaboratively to find a solution for the future operation of Kettering Leisure Village;
- Undertaking feasibility studies for potential capital projects: creation of wellbeing hubs at Redwell Leisure Centre & Lodge Park Sports Centre;
- Delivering the Public Health funded projects and programmes: Active Families; Active for Health; Wellbeing Walks; Love Exploring; Activity Buddies; Free Swimming (see below);
- Migration of the leisure management system to the Cloud;
- Secure long-term lease with Northants football Association & funding investment for Kettering Artificial pitch;
- Deliver project to replace Desborough Leisure centre floor;
- Develop future options for redevelopment of the tennis provision in Kettering;
- Roll out play day model across all of North Northamptonshire;
- Develop solutions to mitigate energy cost pressures across in-house and commissioned provision;
- Work with Assets & community organisations to develop plan to devolve Hazelwood Neighbourhood Centre;
- Develop business case and secure funding for smart gym equipment to support people with long term health conditions;



North  
Northamptonshire  
Council



North  
Northamptonshire  
Leisure



# Overview of Culture, Heritage & Tourism

Jack Pishhorn

Strategic Lead – Culture, Tourism and Heritage



North  
Northamptonshire  
Council





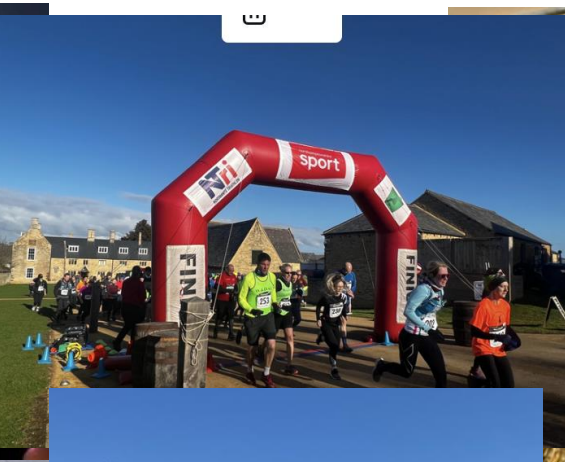
‘To create a new sustainable, efficient, and engaging heritage, cultural and tourism service that will shine a light on the outstanding assets we have within North Northamptonshire, whilst protecting and preserving heritage for future generations. Working with partners, we aim to improve and increase the tourism economy by developing infrastructure and introducing pioneering marketing strategies to attract inward investment and visitors’.

# The Chester House Estate



## THE VISION

- **Connecting** the people of Northamptonshire to their 10,000 year story
- Having the **community** at the heart of all we do
- Delivering a pioneering and diverse learning programme, **accessible** for all ages
- Offering a free to enter estate, for **everyone**
- Being financially **sustainable** with an innovative commercial offering
- Establishing, promoting and growing **local** businesses, produce and tourism
- Caring for and **preserving** our natural and historical landscape
- Improving the **wellbeing** of local residents



# Northamptonshire Archaeological Archive Centre



- One of the largest Archives in Europe
- Preserving the publicly accessible Northamptonshire archaeological archives
- Space for around 30,000 boxes of material (17,000 have moved into date)
- Overseen by Ben Donnelly-Symes and Georgina Clipstone
- Supported by Historic England
- A base for the Portable Antiquity Scheme
- Partnership with the University of Leicester
- June 'Digging' and Roman Festival
- Application for Museum Accreditation in 2023

In the first year of opening, the ARC have had more than double the number of researchers access archaeological archives from Northamptonshire than the previous twelve years combined

# Discover Northamptonshire



- Opened April 2023 – 5-year BP / Tenancy
- Open 7 days per week 10am-6pm
- Based at Rushden Lakes Shopping Centre
- 11 Indoor interactive screens
- 1 Large external screens
- Temporary exhibitions
- Flexible indoor events and meeting space
- Northamptonshire focused retail area
- Working with Northamptonshire Heritage Forum and Open Art Studios
- Long term tourism strategy (with Visit England)
- Future LVEP development
- Leading on the NNC Events programme e.g Corby Fireworks, NNC Festival
- Supporting the ongoing development and delivery of Destination Nene Valley

# Corby Heritage Centre



- Open Monday to Saturday 1pm-4pm
- Managed by Billy Dalziel with the support from Volunteers
- The centre is free to enter and has previously been supported by the National Lottery Heritage Fund.
- Visitors to the Heritage Centre have the opportunity to learn about the historic nature of the building itself and also the story of Corby Old Village with education, work and entertainment themes being explored in the temporary exhibition area of the centre.
- There are temporary exhibitions to cover local history for the community and school groups throughout the year.

# The Greenway Project



"Our aim is to continue to develop and enhance the greenway using existing and creating new routes and networks to provide links across the area to create safer, off road trails connecting residents and visitors to leisure, work, tourism, education and heritage"

- Programme delivery lead – Lucy Hawes
- New long-term strategy currently in development with stakeholders – expected Summer 23.
- Current core focus is connecting Rushden Lakes to Wellingborough embankment
- Working with the Ise Valley Greenway (Nene Rivers Trust) to connect the towns including Corby and Kettering.



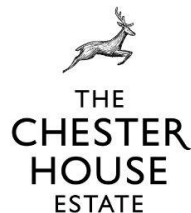
# Cornerstone



- Home to The Alfred East Art Gallery, Kettering Museum and Kettering Library.
- New events and workshop spaces - The Garden Room and the Black Box event space, capable of accommodating up to 130 people.
- A new cafe capable of seating 30 people indoors and 45 outside on a new terrace.
- A new climate controlled gallery store capable of storing and caring for the Alfred East gallery collection.
- Refurbished gallery spaces with climate control to allow the hosting of local and national exhibitions, talks and workshops.
- New toilets with accessible facilities and amenity spaces including a Changing Places Toilet.
- Finalisation of project ongoing with potential roof replacement.
- Future NLHF museum project.

# Culture, Tourism & Heritage Service Plan 23-24 Key Priorities

- ❑ Completion of the service re-structure & Implementation of new service business plan and profit/loss account
- ❑ Progression of the Cornerstone roof replacement project
- ❑ Cornerstone mobilisation and opening
- ❑ Implementation of the Northamptonshire Local Visitor Economy Partnership & new Tourism Strategy
- ❑ Develop plans for the future of Kettering museum including a bid to the NLHF for investment into NN archiving facilities
- ❑ Adoption & Implementation of the long-term Greenway Strategy
- ❑ NN Festival, Corby Fireworks and future NNC events programme
- ❑ Delivery of summer ARC/Chester House Estate heritage engagement programme
- ❑ Intergration of Escape Rooms and second wedding/events venue at Chester House Estate
- ❑ Achieving museum accreditation for the ARC and Chester House;
- ❑ Continuing to grow the commercial and events offer at the Chester House Estate to improve financial sustainability;
- ❑ Developing an options appraisal for the future governance of the Chester House Estate;
- ❑ Undertaking a feasibility study for Phase 2 for Chester House (commercial catering kitchen & Victorian greenhouse refurbishment).



# Overview of Communities and Wellbeing

Hazel Webb

Strategic Lead – Communities & Wellbeing



North  
Northamptonshire  
Council

A NEW *sense*  
OF PLACE

# Communities & Wellbeing Programme Overview

Towns & Parishes

Refugee Programmes

Community & VCSE Grants

Community Engagement

Community Centres

Bookings for Parks & Open Spaces

Armed Forces Covenant

Health & Wellbeing

Community Development

Well Northants

Household Support Fund

ICS Place Development Programme



North  
Northamptonshire  
Council

A NEW *sense*  
OF PLACE

# Communities & Wellbeing Service Plan 23-24 Key Priorities

- Playing a key part in the new ICS Place model: supporting Community Wellbeing Forums and Local Area Partnerships;
- Supporting the test and learn phase and sustainable case for change for Support North Northants, the new early help and prevention service;
- Developing a new Communities Strategy to inform the Council's approach to such issues as strategic and infrastructure investment in the VCSE; how we work with the VCSE; how we support volunteering; how the VCSE interacts with Public Sector Commissioners;
- Undertaking a review of the operating models and funding arrangements for Community Centres;
- Continuing to support refugee resettlement in North Northamptonshire helping guests successfully move into settled accommodation in the private rented sector or into properties acquired by NNC under the Local Authority Housing Fund;
- Developing new policies and procedures for effective delivery of Household Support Fund 4;
- Reviewing the effectiveness of the Town and Parish Strategic Forums.

A NUMBER OF THESE MAY BE PRESENTED TO OTHER EAPs

# Overview of Community Safety

Mike Greenway

Strategic Lead – Community Safety



North  
Northamptonshire  
Council

NORTH  
NORTHAMPTONSHIRE



Community Safety  
Partnership

# Community Safety Operations

- Case management – ASB, neighbour issues etc. education and enforcement
- Early help and prevention – domestic abuse, violence, families in need, education in schools and other campaigns
- Partnerships – community safety partnership functions
- CCTV – management of town centre and public realm CCTV plus one or two units in NNC properties
- Crime prevention – Safer Streets, target hardening etc.

## Working in partnership

- North Northamptonshire Community Safety Partnership
  - 5 responsible organisations: NNC; police; fire authority; NHS; probation
  - Strategic review to identify main issues of concern and localities with main problems
  - Plan to tackle the priorities identified
- Domestic Abuse Partnership Board
- Serious Violence Duty
- Drugs and Alcohol Partnership
- Victims' Duty (forthcoming)
- Protect Duty (forthcoming)



# Crime Prevention

- Home Office Safer Streets Programme
  - Victoria Wellingborough, All Saints Kettering, Hemmingwell Wellingborough
  - Queensway Wellingborough – CCTV, alleygates, callisthenic gym, bike track project and replacement doors on residential properties.
  - Clover Hill (William Knibb) Kettering – CCTV, alleygates, video doorbells and security products for target hardening residential properties.
- CCTV
  - Town centre networks – Corby, Kettering and Wellingborough
  - Police – ANPR
  - Deployable CCTV

# Safer Communities Team – key milestones 2023-25



# Community Safety Service Plan 23-24 Key Priorities

- Fully embedding the Victim's Duty across our services and the wider Council;
- With partners delivering the 2022-25 Community Safety Plan;
- Delivering Safer Streets 4;
- Adopting a new ASB policy and procedure;
- Developing a commissioning framework and resource for Domestic Abuse and Sexual Violence services;
- Working with partners on the Strategic Needs Assessment and Delivery Plan arising out of the new Serious Violence Duty;
- Scoping a comprehensive review of CCTV and an options appraisal for future delivery.

LARGELY WOULD PRESENT TO THE PROSPEROUS COMMUNITIES EAP



North  
Northamptonshire  
Council

# Overview of North Northamptonshire Library Service

Carl Dorney

Service Manager (hosted West)



North  
Northamptonshire  
Council

# Library Service Overview

Statutory Libraries

Support to Community Managed Libraries

Community Hubs & Warm Spaces

Bookstart

106 funded capital improvement programme

Universal Offer:

Reading  
Health & Wellbeing  
Digital & Information  
Culture & Creativity  
Children's promise  
Six steps – Visually impaired offer

Management & Support services

BIPC

Place Shaping

Library To You



# Library Service Plan 23-24 Key Priorities

- Provide management and support services to deliver Comprehensive and efficient Library Service;
- Deliver a disaggregation of library support services;
- Deliver comprehensive library services from 15 council run statutory libraries. Maintaining scheduled opening hours supported by the online library offer.
- Complete successful transfer of 2 remaining Community Managed Libraries (CMLs) and build relationships between statutory and CML libraries to maximise support and partnership working;
- Deliver countywide Bookstart offer following Book Trust pilot;
- Enhance libraries as community hubs by supporting Place Shaping Agenda and local area partnerships;
- Support Levelling Up agendas e.g: resources & opportunities to support jobseekers and the self-employed to get back into employment; Business & IP Centre delivering support to self-employed & SME start-ups; Job Clubs, training/courses and 1 to 1 support available; Volunteer opportunities to build confidence, skills and portfolios;
- Complete and launch library phase of Cornerstone in Kettering;
- Complete BIPC DCMS funded 3 year project; start delivering the 2 year UKSPF funded projects alongside existing core BIPC offer.

